



Republic
of Rwanda



nlsr
NATIONAL INSTITUTE OF
STATISTICS OF RWANDA



PRODUCER PRICE INDEX (PPI)

November, 2025

Copyright © November, 2025 National Institute of Statistics of Rwanda,

Cover Photo: Igihe.com/2018

The Producer Price Index (PPI), November, 2025 report is available online at: www.statistics.gov.rw

Additional information not available in the Producer Price Index (PPI), November 2025 report may be obtained from the NISR office in the Economic statistics unit.

Po. Box 6139 Kigali Rwanda ;

Website: www.statistics.gov.rw

Email : info@statistics.gov.rw

Recommended citation:

National Institute of Statistics of Rwanda (NISR), Producer Price Index (PPI) Report, November 2025

Summary

This is the monthly publication of the Producer Price Index (PPI) for the month of November 2025. Note that the sample, weights and methodology for compiling the PPI has been updated as of the index for November 2025. The index also has been rebased to 2024=100. Rates of change in indices for periods prior to November 2025 have not been revised, but discrepancies from previously published indices may occur at the first decimal point, due to rounding effects.

On annual basis:

- General Producer Price Index increased by 3.4 percent;
- Local Producer Price Index increased by 3.3 percent;
- Export Producer Price Index increased by 5.3 percent.

On monthly basis:

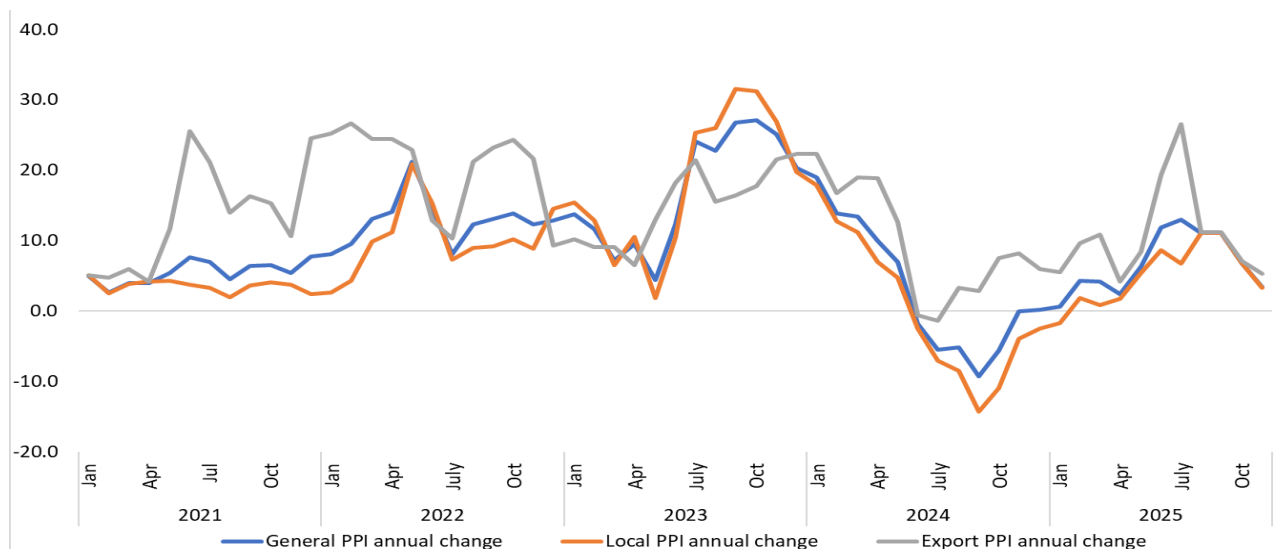
- General Producer Price Index increased by 0.2 percent;
- Local Producer Price Index remained unchanged.
- Export Producer Price Index increased by 2 percent.

Table 1: Producer Price Index, General, Local and Exports

	2024		2025										
	Nov	Dec	Jan	Feb	Mar	Apr	May	June	July	Aug	Sept	Oct	Nov
Annual change													
General PPI	-0.1	0.2	0.7	4.3	4.1	2.4	6.4	11.9	13.0	11.0	13.4	6.8	3.4
Local PPI	-3.9	-2.5	-1.7	1.9	0.9	1.7	5.4	8.8	6.8	11.0	13.0	6.7	3.3
Export PPI	8.2	6.0	5.6	9.7	10.9	4.1	8.4	19.3	26.5	11.2	15.0	7.0	5.3
Monthly change													
General PPI	3.4	-0.5	0.9	-0.9	-0.6	-1.8	2.5	0.6	1.8	-0.4	2.5	-0.8	0.2
Local PPI	3.3	0.5	1.0	-1.1	-2.2	2.0	1.6	-0.6	-0.9	3.2	0.4	-0.5	0.0
Export PPI	3.8	-2.3	0.5	-0.3	2.4	-8.9	4.5	3.1	6.4	-6.4	7.0	-1.6	2.0

Source: NISR

Figure 1: Annual PPI for General PPI, local, and export products PPI



Source: NISR

1 Introduction

The Producer Price Index (PPI) measures the average change over time in prices received by domestic producers to produce their goods and services. The PPI for Rwanda is published on monthly basis. It presents price changes for all aggregated products, products for local sales and that for exports, and covers mining, manufacturing, and utilities.

2 General Producer Price Index

Table below presents the percentage changes on monthly and annual basis.

Table 2: Producer Price Index, General Index summary

ISIC rev. 4 Description	Weights	Percentage change in November 2025	
		on Oct. 2025	on Nov. 2024
Rwanda	1000	0.2	3.4
Mining and quarrying	52	4.8	5.6
Manufacturing	872	0.0	1.9
Electricity, gas, steam and air conditioning supply	54	0.0	34.8
Water supply; sewerage, waste management and remediation activities	22	0.0	0.0

Source: NISR

In November 2025, the general PPI increased by 3.4 percent when compared to the same month of 2024. Prices increased the most in mining and electricity supply.

On a monthly basis, the general PPI increased by 0.2 percent. This is mainly due to an increase in prices of mining and quarrying activities.

3 Local Producer Price Index

The table below presents the percentage changes on monthly and annual basis.

Table 3: Producer Price Index, Local Index summary

ISIC rev. 4 Description	Weights	Percentage change in November 2025	
		on Oct.2025	on Nov. 2024
Rwanda	1000	0.0	3.3
Manufacturing	916	0.1	1.0
Electricity, gas, steam and air conditioning supply	60	0.0	34.8
Water supply; sewerage, waste management and remediation activities	24	0.0	0.0

Source: NISR

In November 2025, the local PPI increased by 3.3 percent when compared to the same month of 2024. Prices increased the most in manufacturing and electricity supply.

On a monthly basis, the local PPI was unchanged.

4 Export Producer Price Index

The table below presents the percentage changes on monthly and annual basis.

Table 4: Producer Price Index, Exports Index summary

ISIC rev. 4 Description	Weights	Percentage change in November 2025	
		on Oct.2025	on Nov. 2024
Exports	1000	2.0	5.3
Mining of other non-ferrous metal ores	506	0.1	1.0
Manufacture of other products (coffee and tea)	422	6.9	16.6

Source: NISR

In November 2025, the export PPI increased by 5.3 percent when compared to the same month of 2024. Prices increased the most in the prices of coffee and tea products.

On a monthly basis, the export PPI increased by 2.0 percent.

Technical note on PPI

The Producer Price Index (PPI) measures the average change over time in the prices received by domestic producers of goods and services, which are outputs of production.

NISR publishes PPI data for Mining, Manufacturing, and Utilities; it is published on a monthly basis, about 4 weeks following the month under review.

The establishments are classified according to ISIC rev.4. Products from establishments with significant secondary activities are classified according to the products' characteristics, rather than the establishment's main activity.

The weights used in the PPI for Rwanda refer to the value of output (turnover without taxes) of establishments as reported in the 2024 National Accounts.

The point of pricing is the establishment. The price is the selling price received by the producer for the selected product as it leaves the factory gate. In general, prices are collected each month from the selected establishment by considering the mid-point of each month of the month under review.

The formula used in the PPI calculation is a monthly chained Laspeyres-type formula.

