



Republic  
of Rwanda



# INDEX OF INDUSTRIAL PRODUCTION

July 2025,



*Monthly Index of Industrial Production  
Formal Activity*

*Published in september 2025*

This is the monthly Index of Industrial Production (IIP). Series has been developed by the National Institute of Statistics of Rwanda (NISR) to provide more timely estimates of the broad trends of industrial output.

Copyright © 2025 National Institute of Statistics of Rwanda (NISR). All rights reserved.

This Report is produced by the National Institute of Statistics of Rwanda (NISR). Additional information about the Index of Industrial production

P.O Box : 6139 Kigali, Rwanda

Tel: +250 788 383103

Hotline: 4321

Recommended citation:

National Institute of Statistics of Rwanda (NISR), (2025), Index of Industrial Production (IIP)

Email: [info@statistics.gov.rw](mailto:info@statistics.gov.rw)

# Introduction

The Index of Industrial Production (IIP) is a key economic indicator that measures the short term industrial performance in terms of production. The IIP has been developed by the National Institute of Statistics of Rwanda (NISR) to provide more timely estimates of trends of industrial output. Highlights of IIP for July 2025 are given below.

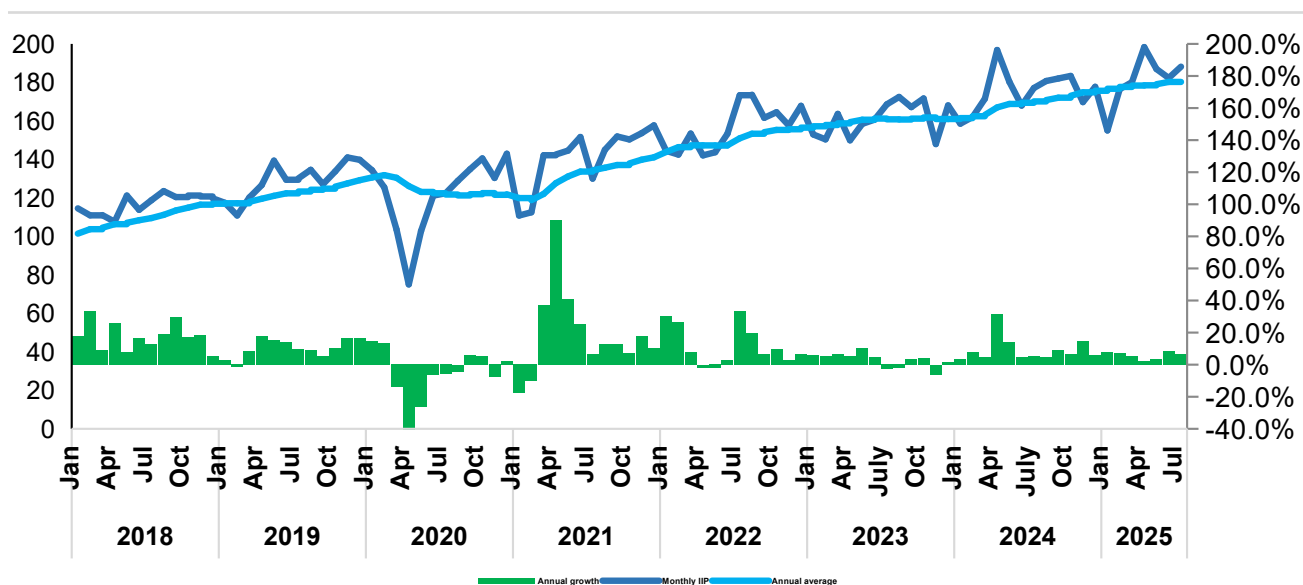
The report highlights trends for the industrial sector, covering both the general index and sector-specific indices for mining, manufacturing, electricity, and water & waste management. Though this indicator aligns with recommendation from the United Nations Statistical Office (UNSO), it excludes the construction activities due to the constraints of data limitations.

## 1. Highlights of IIP/ Summary

In July 2025, the formal sector industrial output increased by 6.3% compared to July 2024, while the annual average growth rate was 6.5%. Activities performed as follows:

- Mining and quarrying increased by 3.8%
- Manufacturing increased by 4.1%
- Electricity increased by 13.6%; and
- Water & waste management increased by 2.0%

**Chart 1: Index of Industrial Production (formal activity) constant 2017 prices**



Source: NISR/ Index of Industrial Production

## 2. Details

The output of manufacturing activities increased by 4.1 %. The increase in manufacturing activities is due to a 14.7 % increase in manufacturing of food processing, and a 4.6 % increase in manufacturing of Metal products, machinery & equipment. However, manufacturing of Non-metallic mineral products and manufacturing of wood & paper; printing decreased by 6.0 % and by 1.5%, respectively.

**Table 1: Growth of sectors and their contributions to annual change**

Activity	Weights	% Changes in July 2025			Contributions to annual change
		On June 2025	On July 2024	Annual average	
Mining and quarrying	13.0%	25.3%	3.8%	6.2%	0.2
Manufacturing of:					
Food processing	23.9%	-15.8%	14.7%	12.7%	2.6
Beverages and tobacco	17.0%	2.4%	1.6%	5.8%	0.2
Textiles, clothing & leather goods	4.5%	7.7%	2.0%	-11.3%	0.2
Wood, paper; and printing	2.6%	9.6%	-1.5%	-6.7%	-0.1
Chemicals, rubber, & plastic products	5.7%	24.6%	1.1%	-1.7%	0.1
Non-metallic mineral products	5.1%	37.6%	-6.0%	-0.7%	-0.3
Metal products, machinery & equipment	4.5%	14.3%	4.6%	7.6%	0.3
Furniture and other manufacturing	3.4%	-28.7%	5.1%	11.4%	0.1
Electricity	18.9%	4.6%	13.6%	18.1%	2.8
Water & waste management	1.4%	4.0%	2.0%	9.5%	0.0
<b>General Index</b>	<b>100%</b>	<b>3.2%</b>	<b>6.3%</b>	<b>6.5%</b>	<b>6.3</b>

Source: NISR/ Index of Industrial Production

### 3. Annexes

**Table 2: General Index of Industrial Production**

Month	2014	2015	2016	2017	2018	2019	2020	2021	2022	2023	2024	2025
Jan	70.7	74.8	79.6	97.5	114.5	117.4	134.3	110.8	144.4	152.9	158.6	171.1
Feb	68.1	72.4	79.7	83.3	110.9	110.8	125.5	112.5	142.5	150.4	162.0	173.4
Mar	71.3	75.9	88.0	102.0	111.0	120.2	103.5	142.2	153.4	163.6	171.5	180.1
Apr	66.5	73.1	74.0	85.4	107.6	126.6	75.0	142.5	142.1	149.9	196.8	198.3
May	73.4	76.0	86.2	112.7	121.2	139.3	102.8	144.6	143.7	158.5	180.3	186.9
Jun	70.8	82.8	97.2	97.7	113.8	129.4	121.2	151.6	153.3	160.6	168.0	182.3
Jul	96.3	87.8	103.0	105.4	118.8	130.1	122.4	130.0	173.3	168.6	177.1	188.2
Aug	104.5	90.3	104.7	103.5	123.5	134.6	128.8	145.0	173.6	172.4	180.7	
Sep	74.5	87.6	91.3	92.9	120.4	127.1	134.9	151.9	161.6	167.2	182.0	
Oct	79.1	90.5	80.0	103.7	121.2	133.8	140.5	150.3	164.5	171.7	183.4	
Nov	74.3	79.8	89.1	102.0	120.7	141.0	130.3	153.6	157.7	148.0	169.8	
Dec	80.9	91.8	95.7	114.0	119.8	139.8	142.9	157.7	167.8	168.0	177.7	

Source: NISR/ Index of Industrial Production

**Table 3: Index of Mining and quarrying**

Month	2014	2015	2016	2017	2018	2019	2020	2021	2022	2023	2024	2025
Jan	68.5	66.5	69.9	95.4	84.9	70.4	141.9	42.6	44.4	50.2	66.8	69.7
Feb	66.5	65.4	70.7	75.0	80.7	63.1	125.3	38.6	38.6	64.8	58.4	66.6
Mar	69.1	65.2	75.8	113.8	68.5	53.9	64.0	43.6	30.8	66.1	75.0	78.1
Apr	60.9	64.1	60.8	70.9	68.8	82.0	33.2	56.4	27.8	64.9	54.4	56.4
May	66.6	62.9	72.9	140.0	80.0	103.0	28.1	47.2	67.8	78.2	51.5	56.5
Jun	65.6	70.3	92.6	80.8	60.3	52.2	70.2	91.1	73.7	60.7	52.6	61.9
Jul	120.1	80.5	105.1	119.0	54.4	65.2	53.3	19.7	93.9	58.9	74.8	77.6
Aug	133.7	85.5	102.7	109.0	59.3	81.4	41.7	67.3	90.9	60.8	48.2	
Sep	67.4	80.8	85.9	88.1	67.2	98.2	49.8	103.9	49.3	68.5	69.4	
Oct	74.5	90.4	65.2	120.4	60.8	121.7	46.3	69.8	86.2	79.0	75.8	
Nov	72.9	71.8	88.8	99.4	63.2	179.7	49.9	44.7	94.4	61.3	89.0	
Dec	66.7	83.1	88.4	88.4	70.8	131.9	35.7	44.8	116.7	61.7	63.3	

Source: NISR/ Index of Industrial Production

**Table 4: Index of Manufacturing**

Month	2014	2015	2016	2017	2018	2019	2020	2021	2022	2023	2024	2025
Jan	69.1	78.1	84.1	97.3	122.5	128.9	138.8	113.5	155.2	159.0	169.4	181.4
Feb	70.1	79.0	86.8	85.8	118.3	122.0	125.7	121.6	168.5	171.4	187.6	188.9
Mar	71.4	85.6	97.1	99.2	122.9	132.5	112.7	161.2	176.4	184.2	200.0	203.4
Apr	68.5	80.1	79.5	86.3	113.6	134.0	75.7	153.3	163.6	162.8	266.5	278.7
May	77.7	82.9	94.2	104.5	128.2	146.1	124.7	151.1	140.1	172.8	214.7	218.6
Jun	72.9	95.9	104.9	105.8	133.4	160.2	146.9	155.3	162.7	188.2	214.1	218.9
Jul	79.1	95.7	103.3	100.2	134.0	141.3	152.7	140.0	196.4	201.2	181.5	188.8

Month	2014	2015	2016	2017	2018	2019	2020	2021	2022	2023	2024	2025
Aug	84.9	98.0	108.9	101.9	141.1	148.1	153.1	163.6	201.9	208.0	201.8	
Sep	83.1	97.0	98.0	94.5	129.2	139.6	169.6	163.3	186.5	186.8	214.5	
Oct	86.0	92.6	88.5	100.6	133.2	143.7	172.6	160.5	184.1	184.9	209.7	
Nov	70.6	86.1	88.8	103.1	134.7	142.2	141.7	172.7	171.0	150.4	178.1	
Dec	93.8	101.8	100.1	120.9	133.9	142.8	160.0	178.8	176.0	186.8	212.3	

Source: NISR/ Index of Industrial Production

**Table 5: Index of Electricity**

Month	2014	2015	2016	2017	2018	2019	2020	2021	2022	2023	2024	2025
Jan	75.5	80.7	92.2	94.7	105.4	115.2	118.9	126.9	143.4	164.8	194.8	203.1
Feb	66.5	73.3	84.3	88.2	99.4	106.6	116.2	116.3	135.6	155.0	158.1	192.1
Mar	73.8	77.9	93.2	100.1	109.4	116.3	118.2	133.8	154.9	173.1	172.9	212.9
Apr	74.0	79.9	91.1	96.1	100.5	114.1	98.2	132.5	149.6	159.6	172.8	173.6
May	76.7	90.5	96.1	102.3	112.1	121.6	114.7	136.0	153.1	176.5	196.1	201.7
Jun	75.2	76.2	90.7	97.0	110.2	115.4	115.6	140.6	149.9	137.3	188.5	212.1
Jul	75.6	83.4	91.0	102.7	115.3	122.4	124.3	139.3	153.4	136.9	195.4	221.9
Aug	76.1	81.6	96.2	105.4	116.0	123.1	126.1	139.4	160.5	137.5	213.6	
Sep	73.7	79.3	90.7	101.7	111.8	119.9	123.1	142.0	156.6	135.2	202.9	
Oct	79.1	86.6	95.8	105.8	116.5	121.4	129.0	149.2	161.9	156.7	209.0	
Nov	81.1	85.0	93.8	101.6	109.8	116.6	127.4	138.2	156.1	178.1	195.3	
Dec	78.6	83.9	97.0	104.4	111.7	120.5	130.5	141.5	152.3	182.8	205.1	

Source: NISR/ Index of Industrial Production

**Table 6: Index of Water and Waste Management**

Month	2014	2015	2016	2017	2018	2019	2020	2021	2022	2023	2024	2025
Jan	90.8	93.2	90.5	99.9	103.7	109.9	111.9	123.5	149.2	160.1	156.3	187.6
Feb	78.9	82.1	85.8	89.2	91.1	100.8	101.6	110.3	131.9	143.5	150.4	176.0
Mar	89.1	89.1	98.7	96.8	99.4	108.8	108.0	120.1	149.5	153.7	166.1	168.5
Apr	86.5	84.6	94.1	95.6	93.4	104.9	100.9	124.3	143.5	148.9	158.8	159.8
May	90.1	88.3	97.3	101.5	100.8	110.0	107.2	127.8	146.4	154.7	170.4	185.3
Jun	90.7	87.3	99.5	105.1	103.5	109.5	114.4	142.7	150.1	154.3	178.1	183.4
Jul	93.1	90.1	104.4	107.2	113.2	118.4	124.5	155.4	161.5	166.7	187.0	190.7
Aug	89.8	89.0	105.1	105.5	111.3	117.9	125.6	136.6	156.7	171.3	190.9	
Sep	86.9	85.6	98.0	99.9	108.8	106.2	119.2	124.4	149.3	159.8	181.6	
Oct	86.9	87.3	100.2	96.5	109.8	110.4	118.6	130.8	155.2	164.4	187.1	
Nov	86.9	87.1	94.5	99.2	106.6	105.6	114.5	148.5	147.0	156.7	176.7	
Dec	86.9	87.2	100.6	103.7	110.5	105.2	123.9	150.4	151.1	160.3	180.3	

Source: NISR/ Index of Industrial Production

## Conceptual note on IIP compilation methodology in Rwanda

The Index of Industrial Production (IIP) is a statistical instrument used to monitor the monthly trends in output of industrial activities in Rwanda. It is developed based on a range of short term (monthly) indicators of economic activity.

The IIP series were developed since 2017, and the first publication was done in June 2019. In this publication a series from March 2011 have been compiled and availed to the public. Moreover, figures in this publication are the results of the 2017 rebasing exercise explained below in this note.

The IIP in this statistical release relates to the activity of businesses in the formal sector in Rwanda, defined as those registered with the tax authorities. The IIP series is entirely consistent with the quarterly estimates of Gross Value Added published by NISR, which still provide the most comprehensive and detailed assessment of economic activity.

### 2017 Rebasing

The National Institute of Statistics of Rwanda finalised new series that are based on the 2017 weights replacing old series based on 2014 weights. The International best practice recommends doing it at least once in five years but in Rwanda it is compiled every three years due to the availability of information collected at a higher frequency. Note that the series from 2017 are based on the 2017 weights. For the years before 2017, the growth rates of old series are preserved by dividing the published indices by the linking factors found in the Table 7.

The IIP is produced based on monthly indicators of the volume of economic activity for eleven Rwanda Classification of Products by Activity (RCPA). These are weighted together based on the gross value added in the reference year for the series (currently, 2017), consistent with the estimates of published value added within the Gross Domestic Product series, see Table 8.

The correspondence table between RCPA and ISIC (International Standard Industrial Classification) Revision 4 is shown in Table 9.

**Table 7: Linking factors between old base and new base (linking year = 2017)**

Activity	Linking factors
Mining and quarrying	1.29
Food processing	1.28
Manufacturing of beverages and tobacco	1.00
Manufacturing of textiles, clothing, & leather goods	2.25
Manufacturing of wood and paper; & printing	1.18
Manufacturing of chemicals, rubber & plastic products	1.62
Manufacturing of non-metallic mineral products	1.95
Manufacturing of metal products, machinery & equipment	1.69
Furniture and other manufacturing	1.23
Electricity	1.32
Water and waste management	1.14
<b>General Index</b>	<b>1.29</b>

Source: NISR/ Index of Industrial Production

N.B:

- The series from 2017 are based on the new weights.
- For the years before 2017, the growth rates of old series are preserved by dividing the old series by the above linking factors.

**Table 8: 2017 Gross Value Added**

Activity	Gross Value Added (RWF, billions)	Percentage of total GVA
Mining & quarrying	57.4	13.0%
Manufacturing of food processing	105.8	23.9%
Manufacturing of beverages & tobacco	75.3	17.0%
Manufacturing of textiles, clothing & leather goods	19.9	4.5%
Manufacturing of wood & paper; printing	11.5	2.6%
Manufacturing of chemicals, rubber & plastic products	25.0	5.7%
Manufacturing of non-metallic mineral products	22.4	5.1%
Manufacturing of metal products, machinery & equipment	20.0	4.5%
Furniture & other manufacturing	15.0	3.4%
Electricity	83.6	18.9%
Water & waste management	6.2	1.4%
<b>Total</b>	<b>442.1</b>	<b>100.0%</b>

Source: NISR/ Index of Industrial Production

**Table 9: Matching table between Rwanda Products Classification by Activity (RCPA) and International Standard Industrial Classification Revision 4 (ISIC Rev 4)**

RCPA (Rwanda Classification of Products by Activity)			ISIC Rev.4 (here R stands for Rwanda)		
Code	Level	Description	Code	Code1	Description
B	2	Mining and quarrying	R	RB	Mining and quarrying
CA	4	Manufacturing of food	RC	RC10	Manufacture of food products
CB	4	Manufacturing of beverages & tobacco	RC	RC11	Manufacture of beverages
			RC	RC12	Manufacture of tobacco products
CC	4	Manufacturing of textiles, clothing & leather goods	RC	RC13	Manufacture of textiles
			RC	RC14	Manufacture of wearing apparel
			RC	RC15	Manufacture of leather and related products
CD	4	Manufacturing of wood & paper; printing	RC	RC16	Manufacture of wood and of products of wood and cork, except furniture; Manufacture of articles of straw and plaiting materials
CD	4	Manufacturing of wood & paper; printing	RC	RC17	Manufacture of paper and paper products
			RC	RC18	Printing and reproduction of recorded media
CE	4	Manufacturing of chemicals, rubber & plastic products	RC	RC19	Manufacture of coke and refined petroleum products
			RC	RC20	Manufacture of chemicals and chemical products
			RC	RC21	Manufacture of pharmaceuticals, medicinal chemical and botanical products
			RC	RC22	Manufacture of rubber and plastics products
CF	4	Manufacturing of non-metallic mineral products	RC	RC23	Manufacture of other non-metallic mineral products



RCPA (Rwanda Classification of Products by Activity)			ISIC Rev.4 (here R stands for Rwanda)		
CG	4	Manufacturing of metal products, machinery & equipment	RC	RC24	Manufacture of basic metals
			RC	RC25	Manufacture of fabricated metal products, except machinery and equipment
			RC	RC26	Manufacture of computer, electronic and optical products
			RC	RC27	Manufacture of electrical equipment
			RC	RC28	Manufacture of machinery and equipment n.e.c.
			RC	RC29	Manufacture of motor vehicles, trailers and semi-trailers
			RC	RC30	Manufacture of other transport equipment
CH	4	Furniture & other manufacturing	RC	RC31	Manufacture of furniture
			RC	RC32	Other manufacturing
			RC	RC33	Repair and installation of machinery and equipment
D	2	Electricity	RD	RD35	Electricity, gas, steam and air conditioning supply
E	2	Water & waste management	RE	RE36	Water collection, treatment and supply

Source: NISR/ Index of Industrial Production