



REPUBLIC OF RWANDA



NATIONAL INSTITUTE OF  
STATISTICS OF RWANDA

# PRODUCER PRICE INDEX (PPI)

## FIRST QUARTER 2016

MAY 2016

## 1. SUMMARY

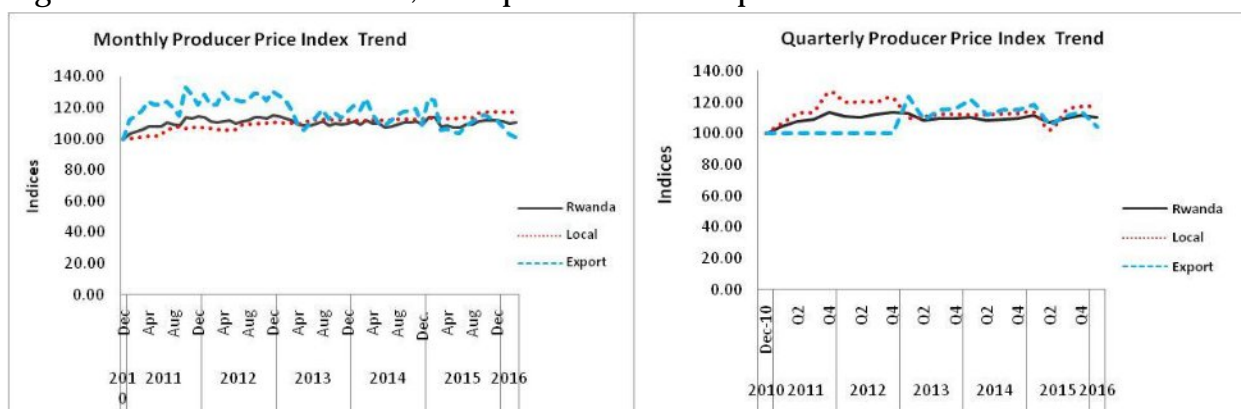
- The annual change in PPI for all Rwanda, first quarter 2016, is -1.07 percent
- The annual change in PPI for local products, first quarter 2016, is 3.28 percent
- The annual change in PPI for exports, first quarter 2016, is -12.23 percent
- The quarterly change in PPI for all Rwanda, first quarter 2016, is -1.29 percent
- The quarterly change in PPI for local products, first quarter 2016, is -0.07 percent
- The quarterly change in PPI for exports, first quarter 2016, is -8.52 percent

Table1. PPI quarterly and annual changes for All Rwanda, local products and exports (in percentages)

	Quarterly change (Q1.16-Q4.15)	Annual change (Q1.16-Q1.15)
PPI for All Rwanda	-1.29	-1.07
PPI for local products	-0.07	3.28
PPI for export products	-8.52	-12.23

Source: NISR

Figure1. PPI for All Rwanda, local products and exports



Source: NISR

## 2. INTRODUCTION

The Producer Price Index (PPI) measures the average change over time in prices received by domestic producers for the production of their goods and services.

The Producer Price Index for Rwanda is published on a quarterly basis; but it highlights monthly Producer Price Index for each of the three months of the quarter under review, the quarterly Producer Price Index and the annual Producer Price Index. It presents price changes for all combined products, products for local sales and that for exports. It covers a sample of 114 establishments and 402 products spread countrywide, both in Kigali City and in rural areas.

The Producer Price Index survey is conducted jointly with the National Bank of Rwanda.

It now covers mining, manufacturing and energy; but NISR intends to include hotels and communication services in the future.

### 3. PPI FOR ALL RWANDA

The table below presents the percentage changes on monthly, quarterly and annual basis.

Table2. Monthly, quarterly and annual changes for PPI for All Rwanda

	2016			Q1
	January	February	March	
<b>Monthly change</b>	-0.75	-1.03	0.38	
<b>Quartely change</b>				-1.29
<b>Annual change</b>	-2.16	-3.10	2.21	-1.07

Source: NISR

As the table 2 shows, on a monthly basis, in January and February 2016, the index decreased by 0.75 and 1.03 percent respectively, while the index for March 2016 increased by 0.38 percent.

On a quarterly basis, the index for the first quarter 2016 decreased by 1.29 percent.

On an annual basis, the index for the first quarter 2016 decreased by 1.07 percent.

Main contributors to change

On a monthly basis,

In January 2016 (-0.75%):

- Coffee and tea contributed negatively by 3.46 percentage points
- Non-ferrous metal ores contributed negatively by 0.45 percentage points
- Sugar contributed positively by 3.28 percentage points

In February 2016 (-1.03%):

- Coffee and tea contributed negatively by 2.24 percentage points
- Non-ferrous metal ores contributed positively by 1.27 percentage points.

In March 2016 (0.38%)

- Non-ferrous metal ores contributed positively by 0.32 percentage points.

On a quarterly basis, the main contributors to the index change of the first quarter 2016 (-1.29%) are:

- Coffee and tea products contributed negatively by 5.89 percentage points
- Sugar contributed positively by 4.53 percentage points

On an annual basis, the main contributors to the index change of the first quarter 2016 (-1.07%) are:

- Non-ferrous metal ores contributed negatively by 1.14 percentage points

#### 4. PPI FOR GOODS PRODUCED FOR LOCAL SALES

The table below presents the percentage changes on monthly, quarterly and annual basis.

Table3. Monthly, quarterly and annual changes for PPI for local sales

	2016			Q1
	January	February	March	
<b>Monthly change</b>	<b>-0.16</b>	<b>-0.14</b>	<b>0.24</b>	
<b>Quartely change</b>				<b>-0.07</b>
<b>Annual change</b>	<b>3.34</b>	<b>3.11</b>	<b>3.38</b>	<b>3.28</b>

Source: NISR

As the table 3 shows, on a monthly basis, in January and February 2016, the index decreased by 0.16 and 0.14 percent respectively, while the index of March 2016 increased by 0.24 percent.

On a quarterly basis, the index for the first quarter 2016 decreased by 0.07 percent.

On an annual basis, the index for the first quarter 2016 increased by 3.28 percent.

#### Main contributors to change

On a monthly basis, the main contributors to the index change are:

In January 2016 (-0.16%):

- Grain mill products contributed negatively by 0.10 percentage points
- Dairy products contributed negatively by 0.08 percentage points

In February 2016 (-0.14%):

- Metal products, except machinery and equipment contributed negatively by 0.15 percentage points
- Grain mill products contributed positively by 0.07 percentage points

In March 2016 (0.24%):

- Sugar contributed positively by 0.17 percentage points
- Metal products, except machinery and equipment contributed positively by 0.11 percentage points

On a quarterly basis, the main contributors to the index change (0.07%):

- Metal products, except machinery and equipment contributed negatively by 0.08 percentage points

On an annual basis, the main contributors to the index change (3.28%):

- Electricity power generation, transmission and distribution contributed positively by 3.31 percentage points
- Sugar contributed positively by 1.93 percentage points
- Printing and related service activities contributed positively by 1.55 percentage points
- Non-metallic mineral products contributed negatively by 3.13 percentage points

## 5. PPI FOR EXPORTS

The table below presents the index and the percentage changes on monthly, quarterly and annual basis.

Table4. Monthly, quarterly and annual changes for PPI for exports

	2016			Q1
	January	February	March	
<b>Monthly change</b>	<b>-3.86</b>	<b>-4.35</b>	<b>-1.82</b>	
<b>Quartely change</b>				<b>-8.52</b>
<b>Annual change</b>	<b>-14.23</b>	<b>-16.93</b>	<b>-4.34</b>	<b>-12.23</b>

Source: NISR

As the table 4 shows, on a monthly basis, in January, February and March 2016 the index decreased by 3.86, 4.35 and 1.82 percent respectively.

On a quarterly basis, the index for the first quarter 2016 decreased by 8.52 percent.

On an annual basis, the index for the first quarter 2016 decreased by 12.23 percent.

### Main contributors to change

On a monthly basis,

In January 2016 (-3.86%):

- Non-ferrous metal ores contributed negatively by 2.40 percentage points
- Tea products contributed negatively by 1.30 percentage points

In February 2016 (-4.35%):

- Coffee products contributed negatively by 7.44 percentage points
- Non-ferrous metal ores contributed positively by 4.83 percentage points

In March 2016 (-1.82%):

- Coffee products contributed negatively by 4.28 percentage points
- Tea products contributed negatively by 4.16 percentage points
- Non-ferrous metal ores contributed positively by 6.60 percentage points

On a quarterly basis, the main contributors to the index change of the first quarter 2016 (-8.52%) are:

- Coffee products contributed negatively by 6.05 percentage points
- Tea products contributed negatively by 3.56 percentage points

On an annual basis, the main contributors to the index change of first quarter 2016 (-12.23%) are:

- Coffee products contributed negatively by 13.59 percentage points
- Non-ferrous metal ores contributed negatively by 9.87 percentage points
- Tea products contributed positively by 10.77 percentage points

## 6. TECHNICAL NOTE ON PPI

The Producer Price Index (PPI) measures the average change over time in the prices received by domestic producers of goods and services—goods and services which are output of production or enter in the production process.

NISR publishes PPI data for Mining, Manufacturing and Energy, and it will continue to be published quarterly, about 8 weeks following the quarter under review.

Over time the PPI will gradually be expanded to include other production sectors such as transportation, telecommunications, agriculture, and services. Expansion of PPI coverage depends upon the availability of data that could be used to derive weights.

The establishments are classified according to ISIC rev. 4; and the classification is determined by their main output.

The weights used in the PPI for Rwanda refer to the value of output (turnover without taxes) of establishments as reported in the 2011 Manpower survey collecting data for the year 2010, which constitutes the reference base period for the PPI calculation (March 2010).

The point of pricing is the establishment. The price is the selling price received by the producer for the selected product as it leaves the factory gate. In general, prices are collected each quarter from the selected establishment by considering the mid-point of each month of the quarter under review.

The formula used in the PPI calculation is the geometric modified Laspeyres.

## 7. ANNEXES: REFERENCE TABLES

Annex 1: PPI, All Rwanda				Weights		Index (December 2010=100)						Contribution Monthly change	
LVL	AGG	Index ID	ISIC rev. 4 Description		Dec-15	Jan-16	Feb-16	Mar-16	Q1 2015	Q4 2015	Q1 2016	Jan-16	Feb-16
	<b>1</b>	<b>R</b>	<b>Rwanda</b>	<b>1000</b>	<b>111.84</b>	<b>111.00</b>	<b>109.86</b>	<b>110.27</b>	<b>111.57</b>	<b>111.82</b>	<b>110.38</b>	<b>-0.75</b>	<b>-1.0</b>
	2	R	RB	96	80.59	75.71	82.33	88.24	110.61	80.31	82.09	-0.45	1.2
	4	RB	RB07	96	80.59	75.71	82.33	88.24	110.61	80.31	82.09	-0.45	1.2
	5	RB07	RB072	96	80.59	75.71	82.33	88.24	110.61	80.31	82.09	-0.45	1.2
	<b>6</b>	<b>RB072</b>	<b>RB0729</b>	<b>96</b>	<b>80.59</b>	<b>75.71</b>	<b>82.33</b>	<b>88.24</b>	<b>110.61</b>	<b>80.31</b>	<b>82.09</b>	<b>-0.45</b>	<b>1.2</b>
	2	R	RC	714	112.96	112.32	109.93	110.12	112.30	112.97	110.79	-0.31	-2.2
	5	RC10	RC105	11	91.01	87.05272	87.05272	87.05272	85.98	91.01	87.05272	-0.04	0.0
	<b>6</b>	<b>RC105</b>	<b>RC1050</b>	<b>11</b>	<b>91.01</b>	<b>87.05272</b>	<b>87.05272</b>	<b>87.05272</b>	<b>85.98</b>	<b>91.01</b>	<b>87.05272</b>	<b>-0.04</b>	<b>0.0</b>
	5	RC10	RC106	42	97.62	96.24795	96.37411	95.92379	96.65	97.54	96.18195	-0.04	0.0
	<b>6</b>	<b>RC107</b>	<b>RC1072</b>	<b>148</b>	<b>99.35</b>	<b>102.08</b>	<b>102.33</b>	<b>107.38</b>	<b>99.99</b>	<b>95.93</b>	<b>103.93</b>	<b>3.28</b>	<b>0.0</b>
	<b>6</b>	<b>RC107</b>	<b>RC1079</b>	<b>146</b>	<b>125.97</b>	<b>122.27</b>	<b>112.18</b>	<b>108.05</b>	<b>124.84</b>	<b>128.28</b>	<b>114.17</b>	<b>-3.46</b>	<b>-2.2</b>
	4	RC	RC11	174	119.63	119.6295	119.6295	119.6295	119.63	119.63	119.6295	0.00	0.0
	4	RC	RC23	31	100.71	100.7496	100.7536	100.7718	104.33	100.65	100.7584	0.00	0.0
	2	R	RD	58	143.07	143.07	143.07	143.07	119.79	143.07	143.07	0.00	0.0
	2	R	RE	129	100.00	100.00	100.00	100.00	100.00	100.00	100.00	0.00	0.0
	2	R	RJ	3	191.60	191.60	191.60	191.60	192.36	191.62	191.60	0.00	0.0

Source: NISR



<b>Annex 2: PPI, Local products</b>				<b>Weights</b>	<b>Index (December 2010=100)</b>						<b>Contribution Monthly cha</b>		
<b>LVL</b>	<b>AGG</b>	<b>Index ID</b>	<b>ISIC rev. 4 Description</b>		<b>Dec-15</b>	<b>Jan-16</b>	<b>Feb-16</b>	<b>Mar-16</b>	<b>Q1 2015</b>	<b>Q4 2015</b>	<b>Q1 2016</b>	<b>Jan-16</b>	<b>Feb-16</b>
<b>1</b>	<b>R</b>	<b>Rwanda</b>		<b>1000</b>	<b>117.23</b>	<b>117.05</b>	<b>116.89</b>	<b>117.17</b>	<b>113.32</b>	<b>117.11</b>	<b>117.04</b>	<b>-0.16</b>	<b>-0.14</b>
2	R	RC	Manufacturing	842	111.81	111.60	111.39	111.73	111.60	111.66	111.57	-0.16	-0.14
4	RC	RC10	Manufacture of food products	169	104.24	103.02	103.11	104.04	102.66	103.47	103.39	-0.17	0.01
5	RC10	RC105	Manufacture of dairy products	23	91.01	87.05	87.05	87.05	85.98	91.01	87.05	-0.08	0.00
5	RC10	RC106	Manufacture of grain mill products	90	97.62	96.25	96.37	95.92	96.65	97.54	96.18	-0.10	0.07
5	RC10	RC107	Manufacture of other food products	47	117.00	117.78	117.54	120.92	114.69	115.03	118.74	0.02	-0.05
6	RC107	RC1071	Manufacture of bakery products	12	150.80	148.96	148.96	148.96	146.22	150.83	148.96	0.00	0.00
6	RC107	RC1072	Manufacture of sugar	36	99.35	102.08	102.33	107.38	99.99	95.93	103.93	0.03	-0.05
4	RC	RC11	Manufacture of beverages	374	119.63	119.63	119.63	119.63	119.63	119.63	119.63	0.00	0.00
5	RC11	RC110	Manufacture of beverages	374	119.63	119.63	119.63	119.63	119.63	119.63	119.63	0.00	0.00
6	RC110	RC1103	Manufacture of malt liquors and malt	362	120.02	120.02	120.02	120.02	120.02	120.02	120.02	0.00	0.00
4	RC	RC12	Manufacture of tobacco products	7	107.92	107.92	107.92	107.92	107.92	107.92	107.92	0.00	0.00
4	RC	RC13	Manufacture of textiles	10	73.62	73.62	73.62	73.62	73.62	73.62	73.62	0.00	0.00
4	RC	RC18	Printing and reproduction of recorded media	40	107.16	106.40	106.40	106.54	103.51	106.70	106.44	-0.03	0.00
4	RC	RC20	Manufacture of chemicals and chemical products	57	112.05	112.15	112.14	112.14	112.93	112.05	112.14	0.00	0.00
4	RC	RC22	Manufacture of rubber and plastics products	24	94.37	94.36	94.37	94.37	94.17	94.37	94.37	0.00	0.00
4	RC	RC23	Manufacture of other non-metallic mineral products	67	100.71	100.75	100.75	100.77	104.33	100.65	100.76	0.00	0.00
4	RC	RC25	Manufacture of fabricated metal products, except machinery and equipment	63	107.80	108.10	104.79	106.89	106.38	107.80	106.59	0.02	-0.15
4	RC	RC31	Manufacture of furniture	18	107.63	108.90	108.90	108.90	109.04	107.63	108.90	0.02	0.00
2	R	RD	Electricity, gas, steam and air conditioning supply	123	143.07	143.07	143.07	143.07	119.79	143.07	143.07	0.00	0.00
2	R	RE	Water supply; sewerage, waste management and remediation activities	28	100.00	100.00	100.00	100.00	100.00	100.00	100.00	0.00	0.00
2	R	RJ	Information and communication	7	191.60	191.60	191.60	191.60	192.36	191.62	191.60	0.00	0.00

Source: NISR



<b>Annex 3: PPI, Export products</b>			<b>Weights</b>	<b>Index (December 2010=100)</b>							<b>Contribution Monthly change</b>	
<b>LVL AGG</b>	<b>Index ID</b>	<b>ISIC rev. 4 Description</b>		<b>Dec-15</b>	<b>Jan-16</b>	<b>Feb-16</b>	<b>Mar-16</b>	<b>Q1 2015</b>	<b>Q4 2015</b>	<b>Q1 2016</b>	<b>Jan-16</b>	<b>Feb-16</b>
<b>1</b>	<b>R</b>	<b>Exports</b>	<b>1000</b>	<b>112.38</b>	<b>108.04</b>	<b>103.34</b>	<b>101.45</b>	<b>118.81</b>	<b>113.99</b>	<b>104.28</b>	<b>-3.86</b>	<b>-4.35</b>
6	RB072	RB0729 Mining of other non-ferrous metal ores	393	80.59	75.71	82.33	88.24	110.61	80.31	82.09	-2.40	4.83
8	RC1079	RC107980 Manufacture of coffee products	268	91.96	91.26	73.23	68.23	161.61	95.69	77.57	-0.21	-7.44
8	RC1079	RC107990 Manufacture of tea products	328	144.13	138.46	133.19	125.96	99.11	145.84	132.54	-1.30	-1.75
6	RC202	RC2029 n.e.c. Manufacture of other chemical products	10	104.26	108.77	109.92	110.91	74.69	104.86	109.87	0.04	0.01

*Source: NISR*

Contacts:

National Institute of Statistics of Rwanda (NISR),  
P.O. BOX 6139 Kigali,  
Tel.: (250) 571035 Fax: (250) 570705.  
Web site: [www.statistics.gov.rw](http://www.statistics.gov.rw)

Publication Director: MURANGWA Yusuf, Director General, NISR;  
[yusuf.murangwa@statistics.gov.rw](mailto:yusuf.murangwa@statistics.gov.rw),

Oscar SIBOMANA, Acting Director of Economic Statistics Department, NISR;  
[oscar.sibomana@statistics.gov.rw](mailto:oscar.sibomana@statistics.gov.rw)

Lucie MUTETIJABIRO, Price Statistician Team Leader, NISR,  
[lucie.mutetijabiro@statistics.gov.rw](mailto:lucie.mutetijabiro@statistics.gov.rw)